

Wheel hub revise

Inhalt

- 1 Parts required per wheel hub2**
- 2 Special Tools2**
- 3 Preparation.....3**
- 4 Removing Wheel Hub.....4**
- 5 Pressing Out Wheel Bearing5**
- 6 Pressing In Wheel Bearing6**
- 7 Miscellaneous Pictures.....7**

1 Parts required per wheel hub

- 2x Bearing SKF 32212
- 1x Shaft seal SKF 30095



- 1x KM12 (M60x2) slotted nut (optional)
- 1x MB12 locking plate DIN 5406 (optional)



- 1x Seal drive shaft
→ See download area or Ebay



- Ca. 0.5kg wheel bearing grease

2 Special Tools

- Wheel bearing press out tool
→ Available on Ebay or as download
→ Order laser parts online: <https://blexon.com/>
- Wheel bearing press-in tool
- Available on Ebay or as download
- KM12 slotted nut wrench (or universal)



- Tap M10
- Workshop press (min. 6to)
→ Maximum force required for my bearings was approx. 5to



3 Preparation

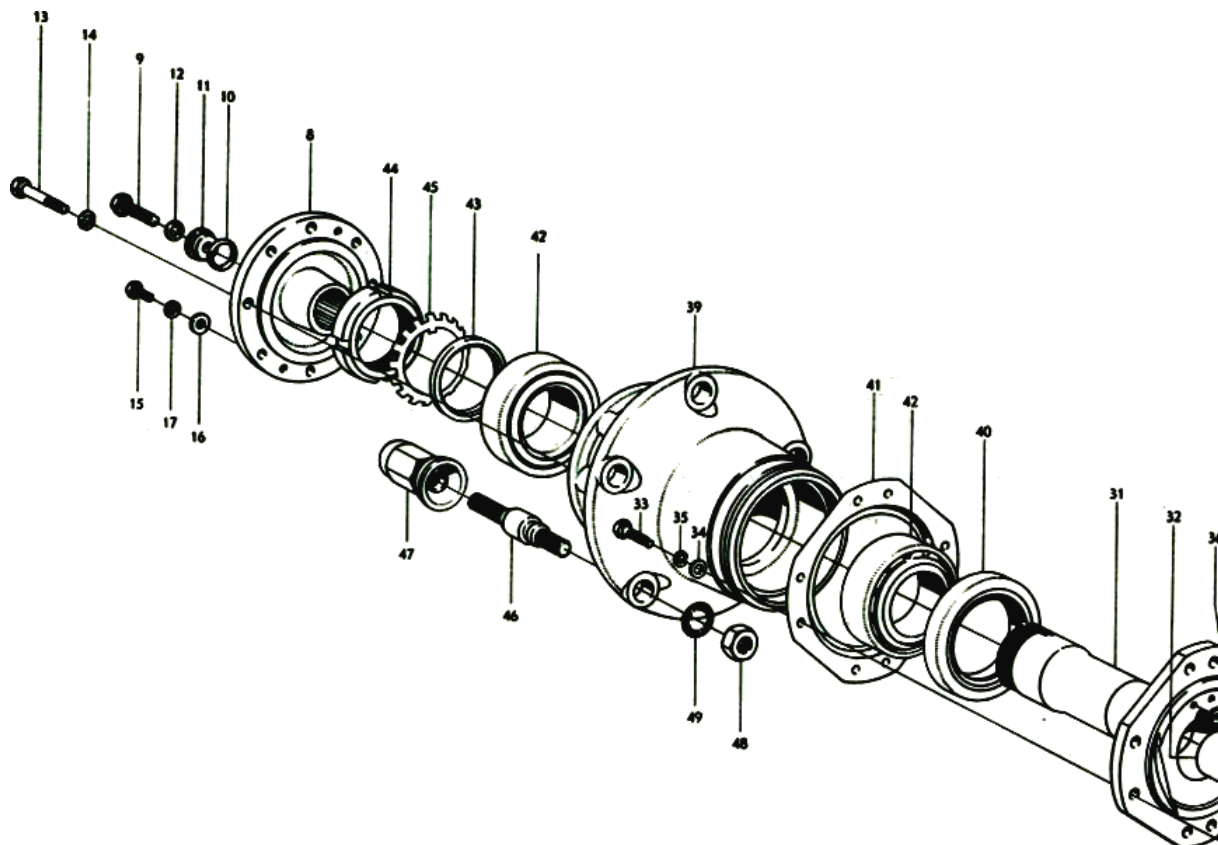
1. Remove wheels
2. Remove brake drums
3. Remove drive shaft



4. Remove brake pads (optional)

4 Removing Wheel Hub

1. Remove central nut (44) und and its securing element (45)
2. Remove spacer (43) (maybe additional spacer in rear axle)
3. Pull out wheel hub (39)



5 Pressing Out Wheel Bearing

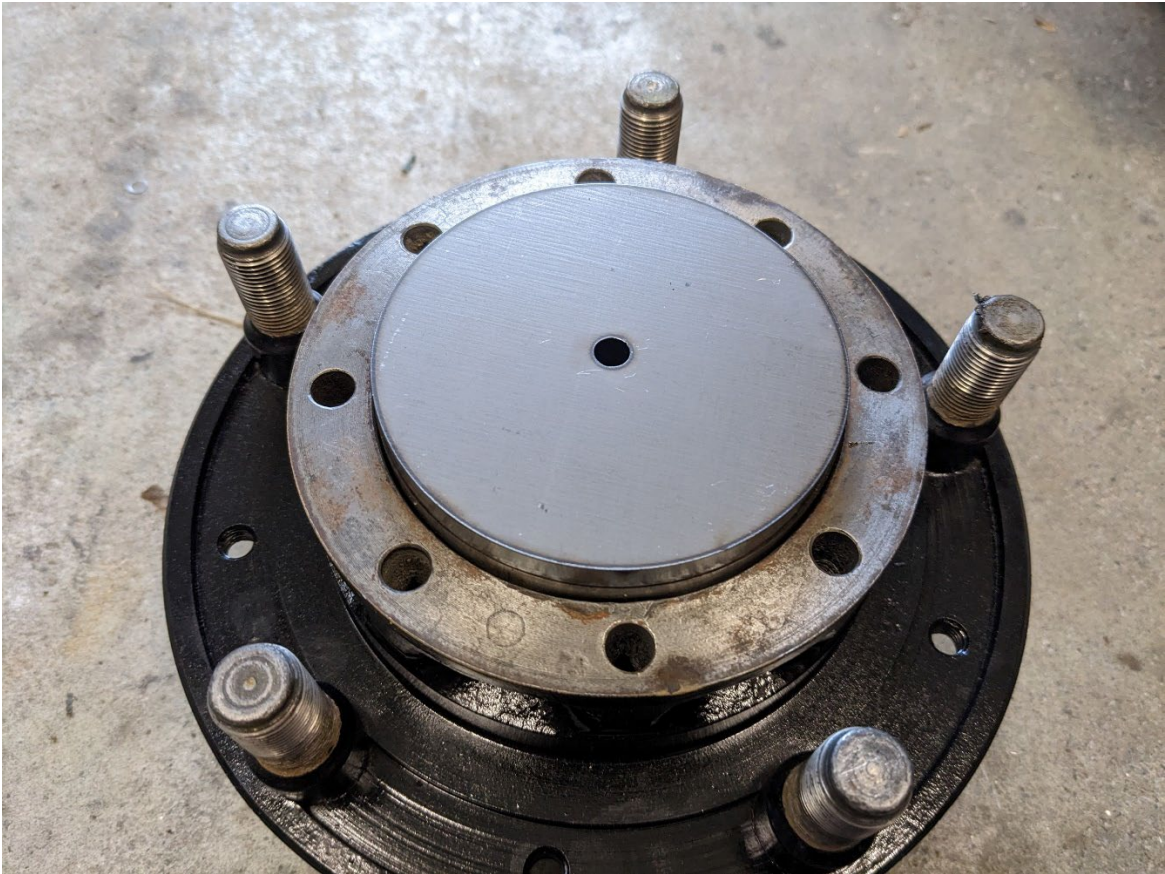


Tool: See download area (.DFX) or on Ebay

Caution: When pressing out, make sure that the original shaft seal W45030043.RL8A on the inside of the vehicle is not damaged.



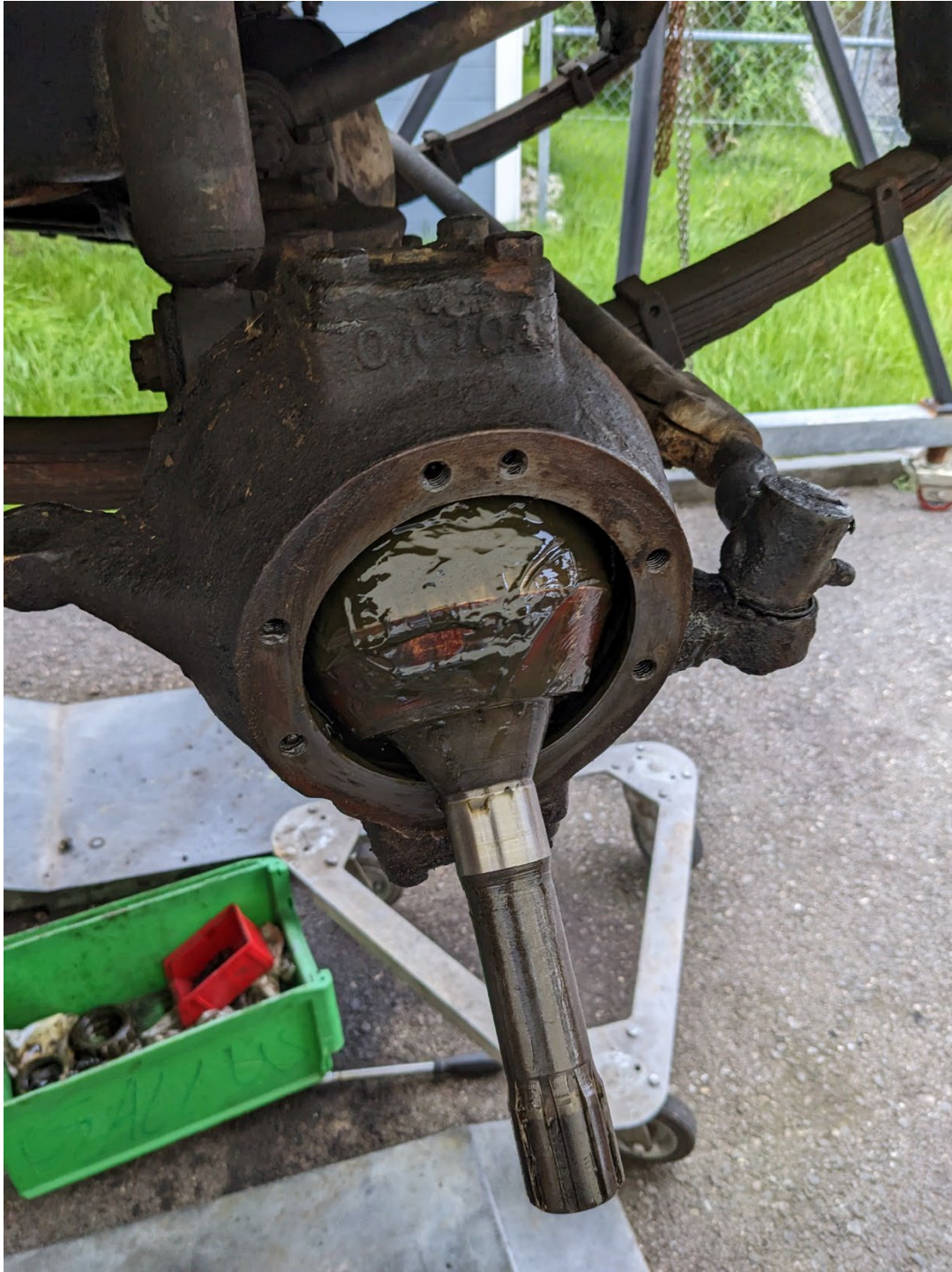
6 Pressing In Wheel Bearing



7 Miscellaneous Pictures



Alternative squeezing tool



Rzeppa joint front axle (to remove, simply pull it straight off)



Original shaft seal. Replacement: SKF 30095